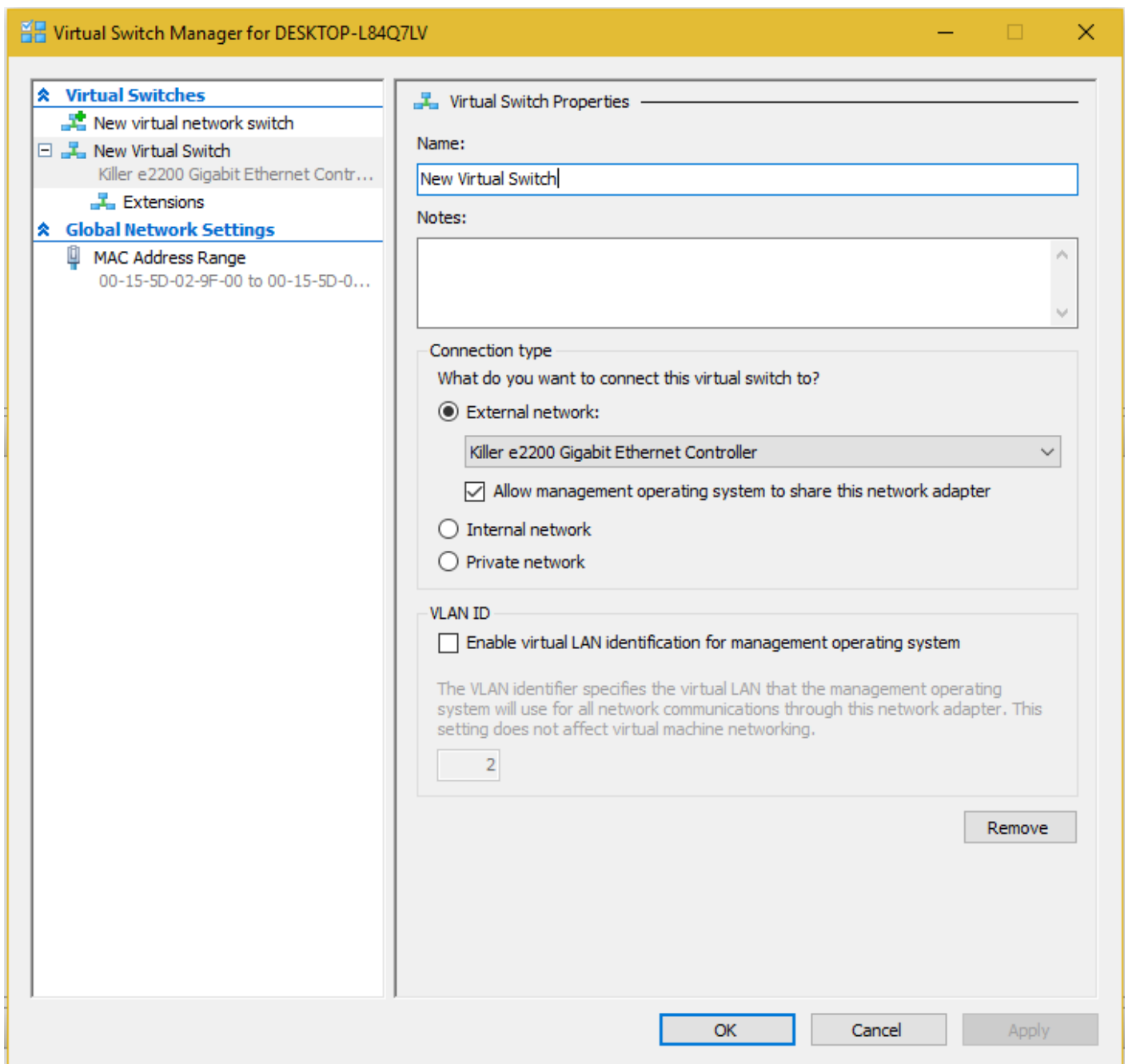


Add IP on vSwitch

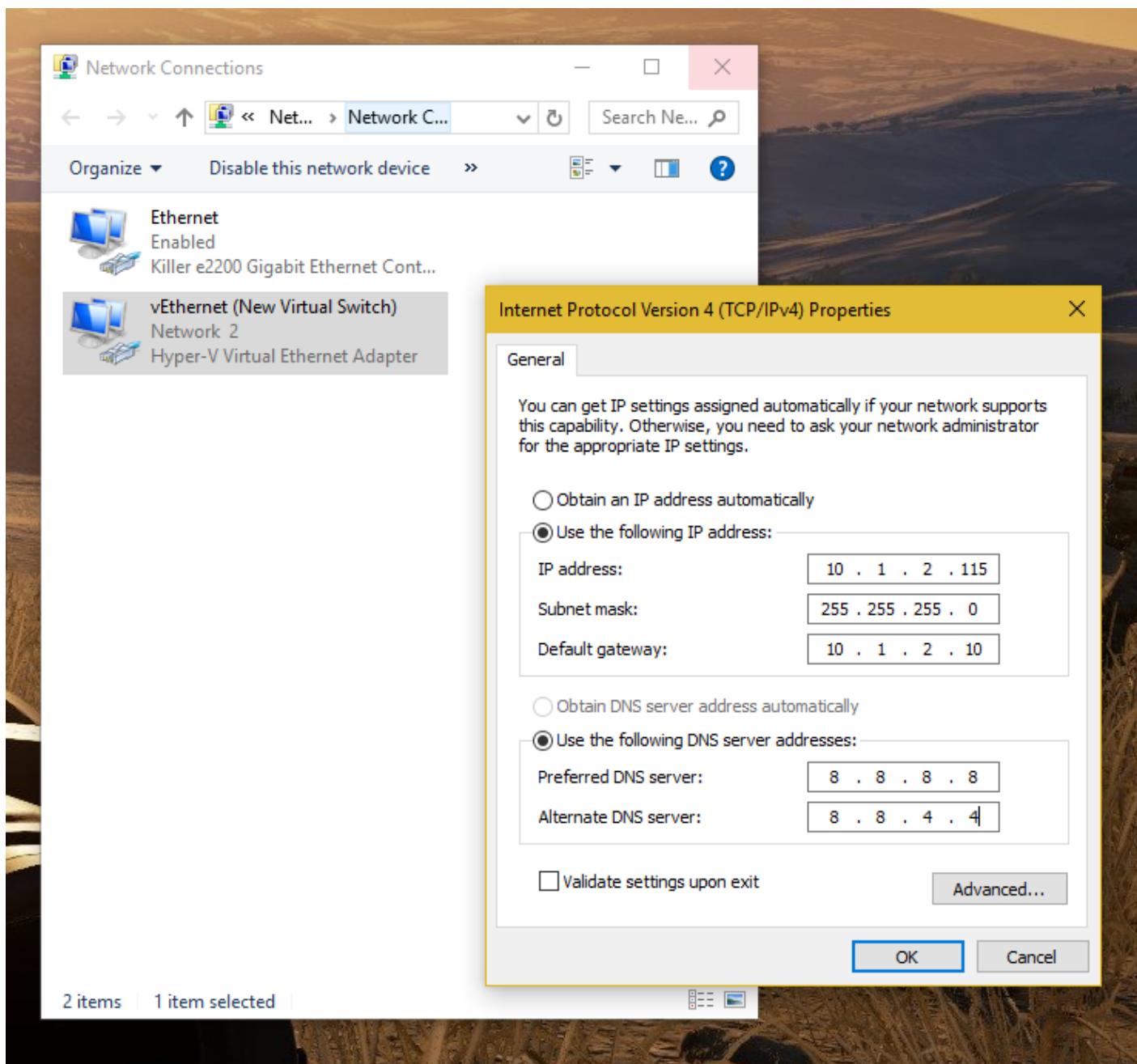
So you installed hyper-v and you need to configure your NIC with your public IP and your secondary IP's, let me show you how.

(Would recommend having physical access / KVM IP if anything fails)

First create a v-Switch in the hyper-v settings.

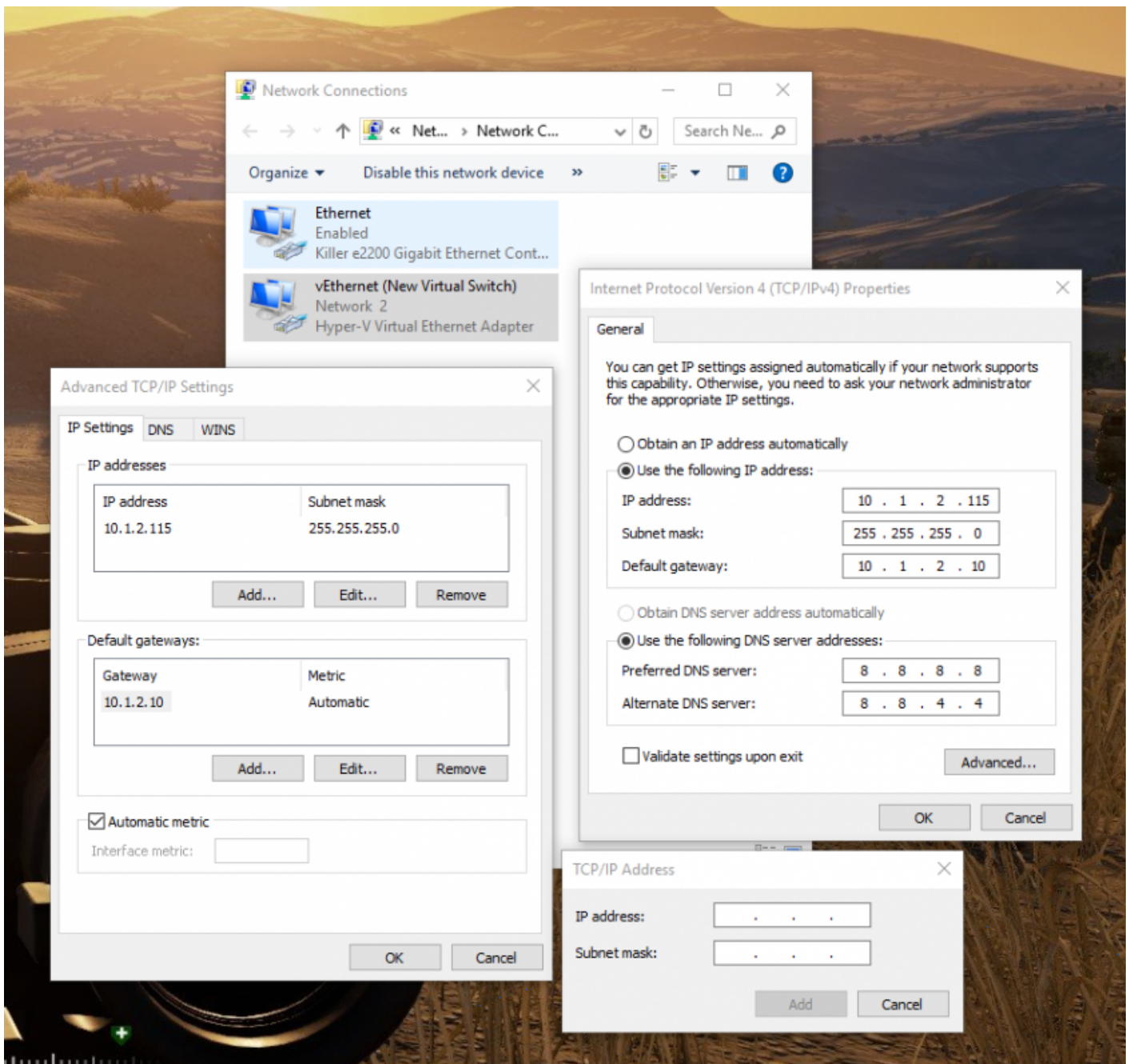


Then, go to the IPv4 settings of your new hyper-v vswitch and add your primary IP.



To add your secondary IP's, you will need to go to the advanced options and put in the first usable address of your secondary subnet, not the broadcast address but the first usable address and the subnet below.

You will then use that address as the gateway for your VM's.



Last step will be to enable ip forwarding, open power-shell as admin and type the following commands :

```
netsh
netsh> interface ipv4
```

Then the following command to view the list of available interfaces

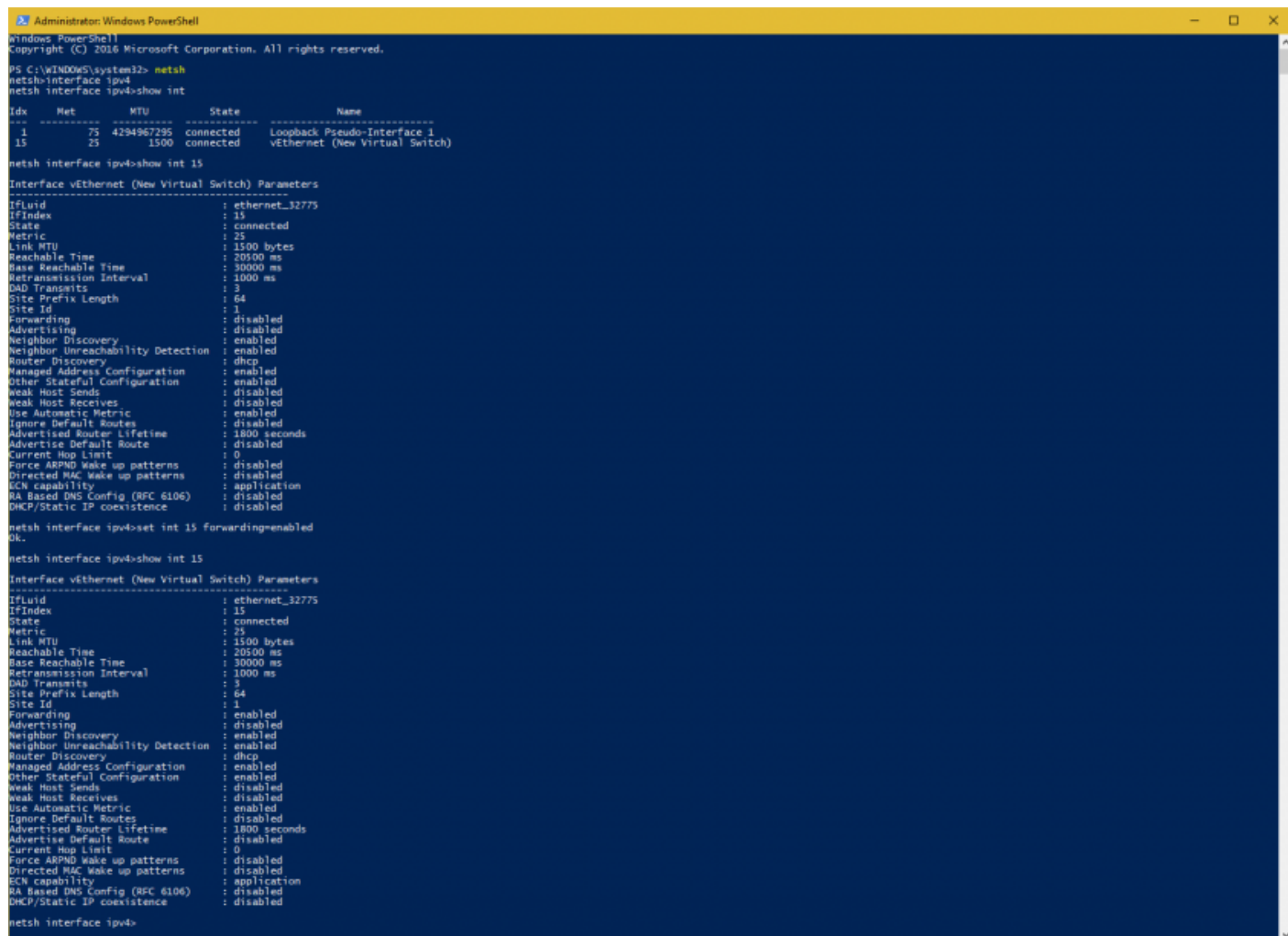
```
netsh interface ipv4> show int
```

To view the interface settings, replace "15" by the proper ID :

```
netsh interface ipv4> show int 15
```

And finally, the following command to enable IP forwarding :

```
netsh interface ipv4> set int 15 forwarding=enabled
```



```
Administrator: Windows PowerShell
Windows PowerShell
Copyright (C) 2016 Microsoft Corporation. All rights reserved.

PS C:\Windows\System32> netsh
netsh interface ipv4> netsh
netsh interface ipv4> show int

Idx  Met  MTU  State  Name
-----
1    75  4294967295  connected  Loopback Pseudo-Interface 1
15   25   1500  connected  vEthernet (New Virtual Switch)

netsh interface ipv4> show int 15

Interface vEthernet (New Virtual Switch) Parameters
-----
IfLuid           : ethernet_32775
IfIndex          : 15
State            : connected
Metric           : 25
Link MTU         : 1500 bytes
Reachable Time   : 20500 ms
Base Reachable Time : 30000 ms
Retransmission Interval : 1000 ms
DAD Transmits    : 3
Site Prefix Length : 64
Site Id          : 1
Forwarding       : disabled
Advertising      : disabled
Neighbor Discovery : enabled
Neighbor Unreachability Detection : enabled
Router Discovery : enabled
Managed Address Configuration : enabled
Other Stateful Configuration : enabled
Weak Host Sends  : disabled
Weak Host Receives : disabled
Use Automatic Metric : enabled
Ignore Default Routes : disabled
Advertised Router Lifetime : 1800 seconds
Advertise Default Route : disabled
Current Hop Limit : 0
Force ARPND Wake up patterns : disabled
Directed MAC Wake up patterns : disabled
ECN capability    : application
RA Based DNS Config (RFC 6106) : disabled
DHCP/Static IP coexistence : disabled

netsh interface ipv4> set int 15 forwarding=enabled
OK.

netsh interface ipv4> show int 15

Interface vEthernet (New Virtual Switch) Parameters
-----
IfLuid           : ethernet_32775
IfIndex          : 15
State            : connected
Metric           : 25
Link MTU         : 1500 bytes
Reachable Time   : 20500 ms
Base Reachable Time : 30000 ms
Retransmission Interval : 1000 ms
DAD Transmits    : 3
Site Prefix Length : 64
Site Id          : 1
Forwarding       : enabled
Advertising      : disabled
Neighbor Discovery : enabled
Neighbor Unreachability Detection : enabled
Router Discovery : dhcp
Managed Address Configuration : enabled
Other Stateful Configuration : enabled
Weak Host Sends  : disabled
Weak Host Receives : disabled
Use Automatic Metric : enabled
Ignore Default Routes : disabled
Advertised Router Lifetime : 1800 seconds
Advertise Default Route : disabled
Current Hop Limit : 0
Force ARPND Wake up patterns : disabled
Directed MAC Wake up patterns : disabled
ECN capability    : application
RA Based DNS Config (RFC 6106) : disabled
DHCP/Static IP coexistence : disabled

netsh interface ipv4>
```

Revision #10

Created 18 July 2017 22:13:05 by Dave

Updated 12 August 2018 00:48:40 by Dave