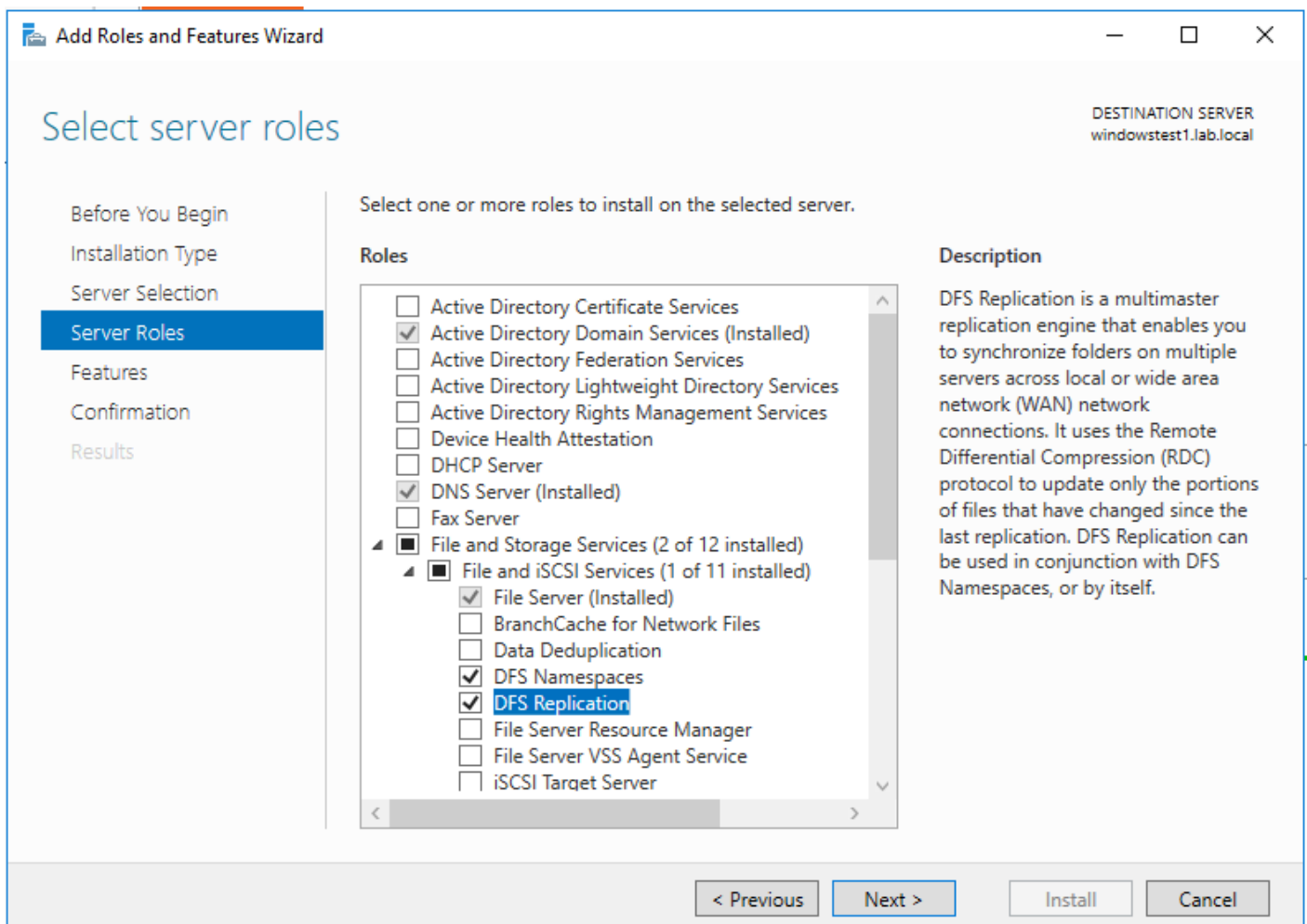


# DFS IIS [config + webroot]

## DFS

Install DFS namespaces and replication on both servers:

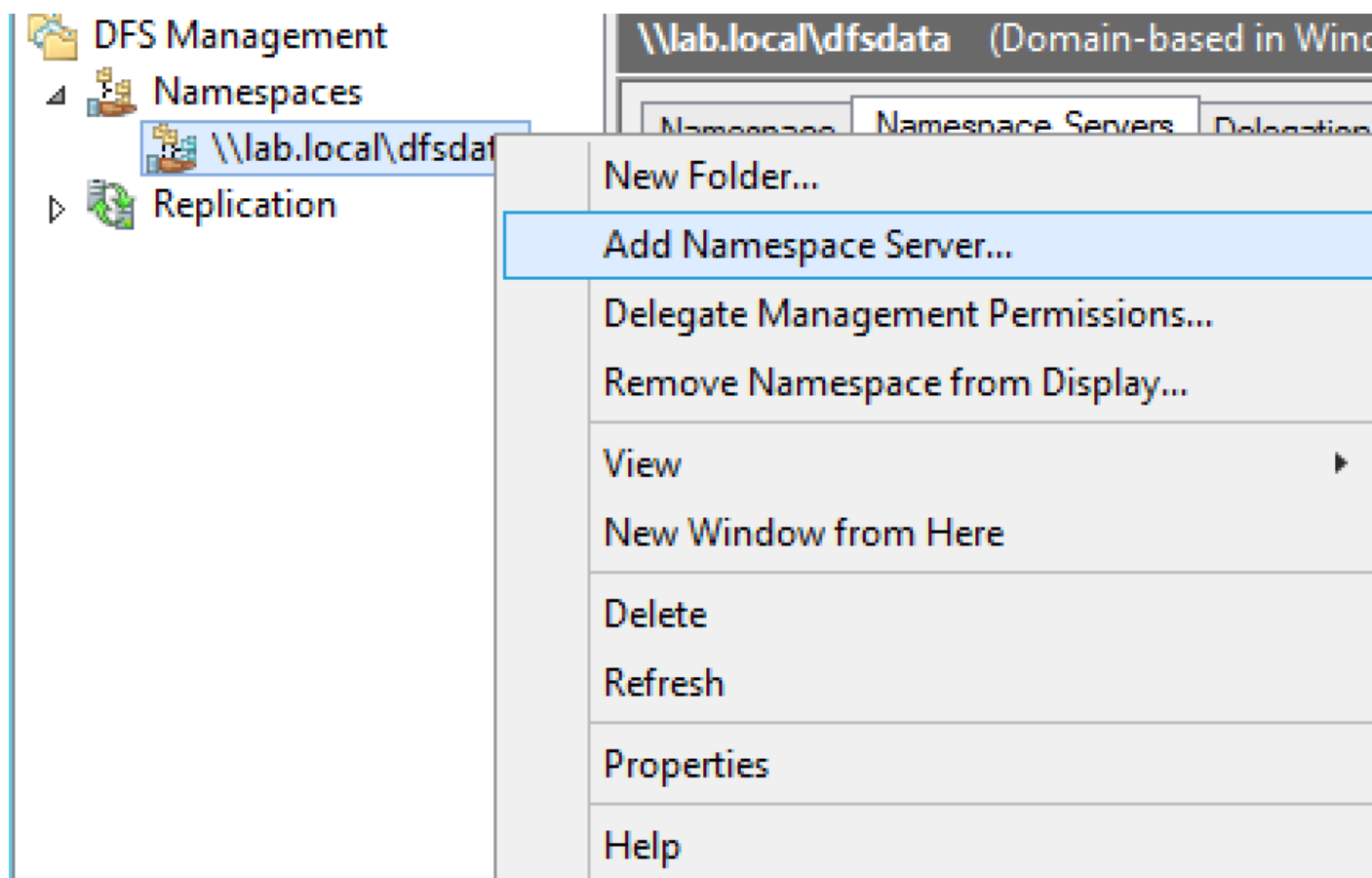
Server Manager>>Add roles and features



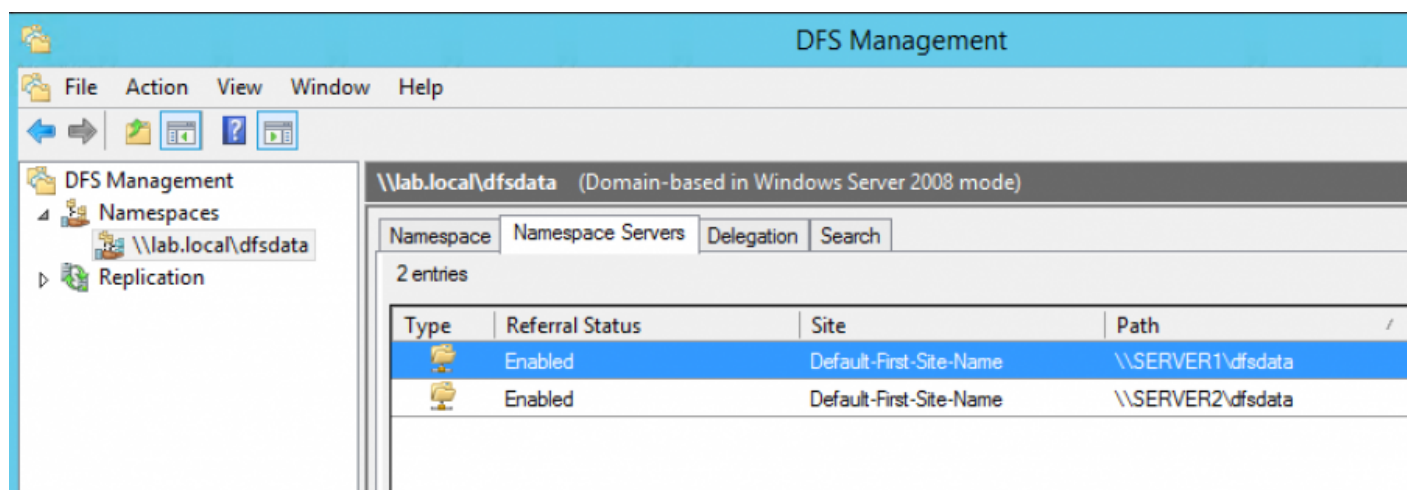
### 1) Create new Namespace

In dfs management, right click on Namespaces and select New Namespace. Enter the name of your dfs1 server and click next, enter dfsdata as the name for your Namespace, click on edit setting and change the permission to "Administrators have full access; other users have read and write permissions". Review the setting and create the Namespace.

2) Right click on your Namespace and select Add Namespace Server, Enter the name of dfs2 server and click next. Dont forget to edit setting and change the permission to "Administrators have full access; other users have read and write permissions".



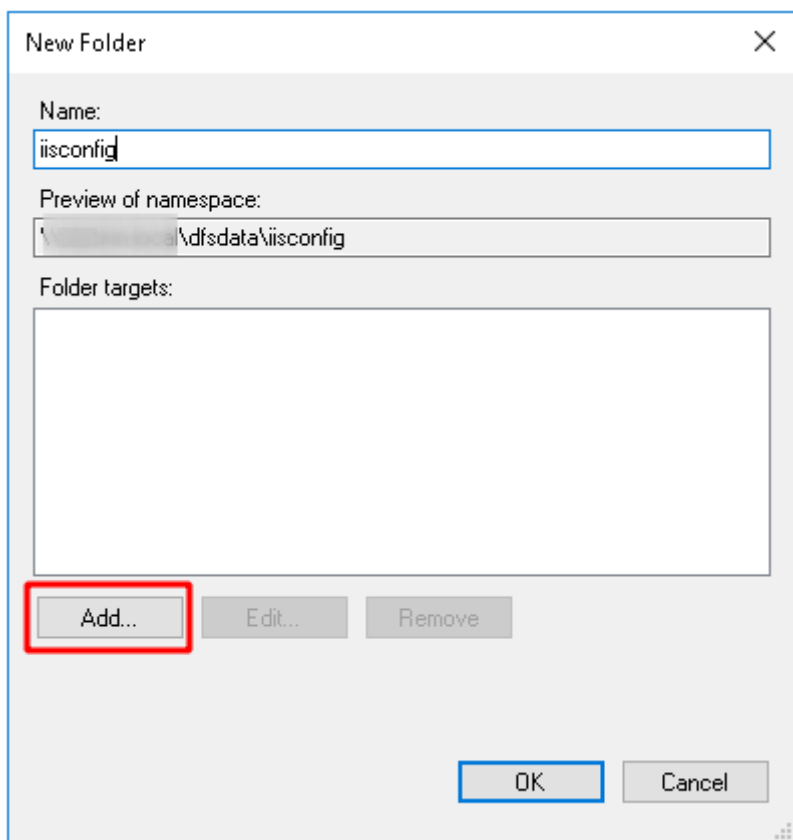
Make sure that both servers are listed in Namespac servers as below:

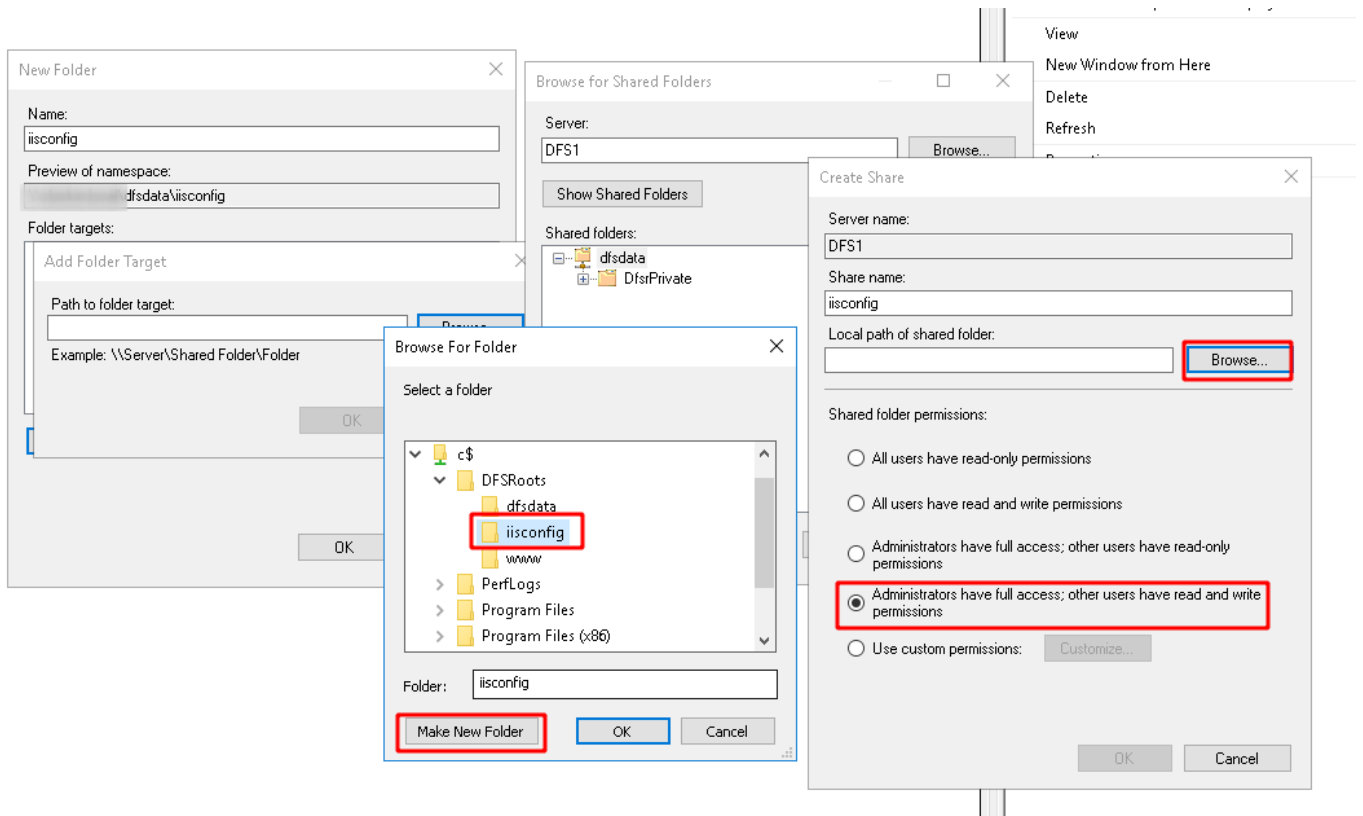
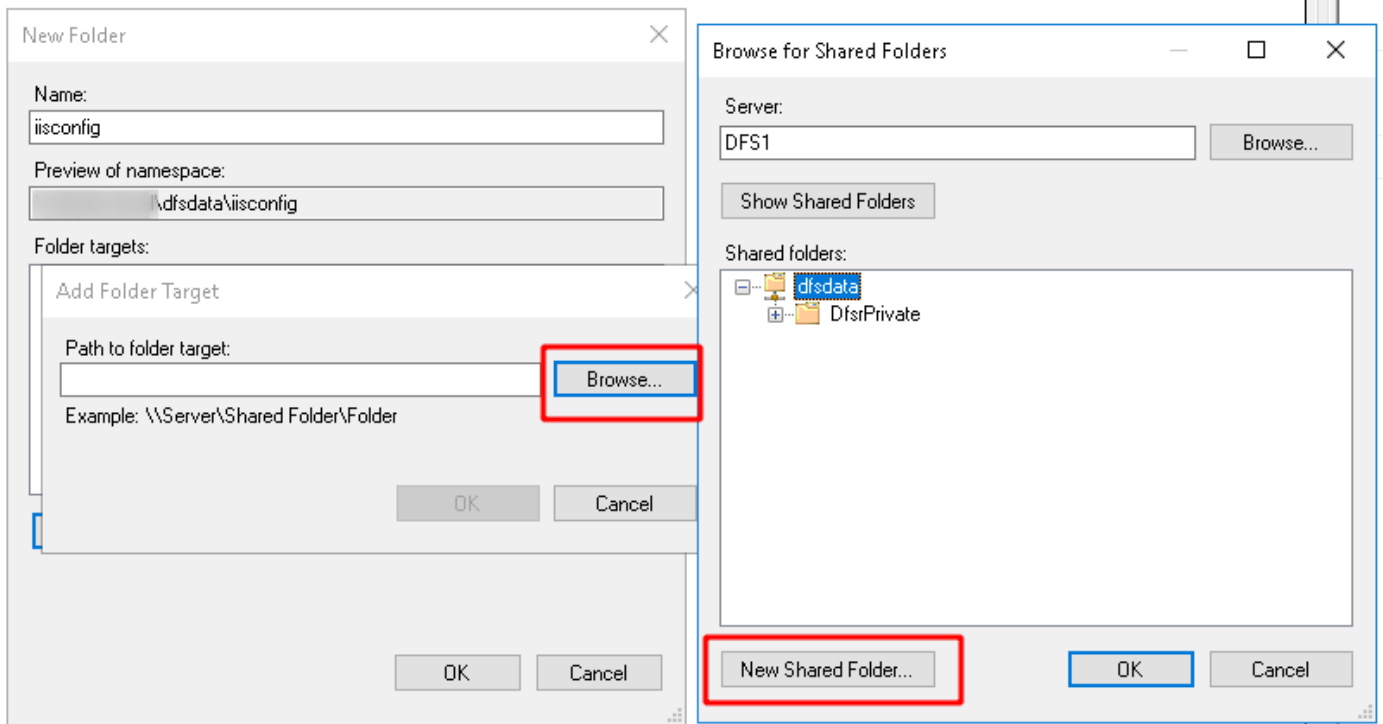


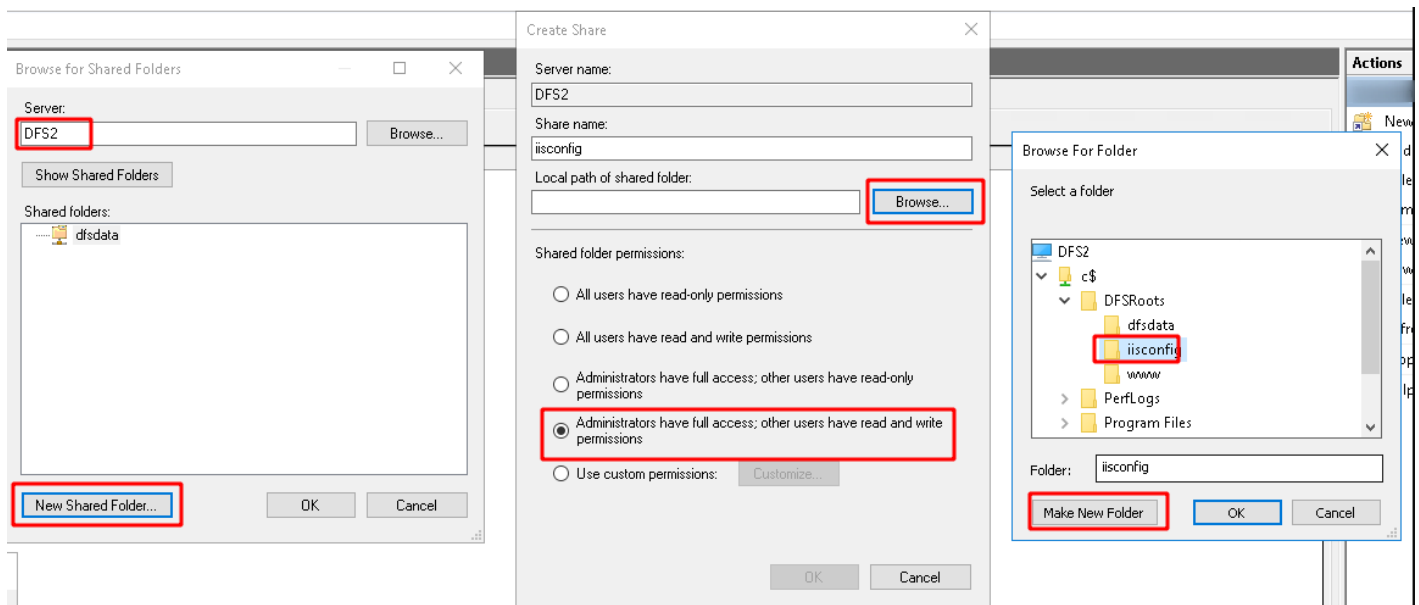
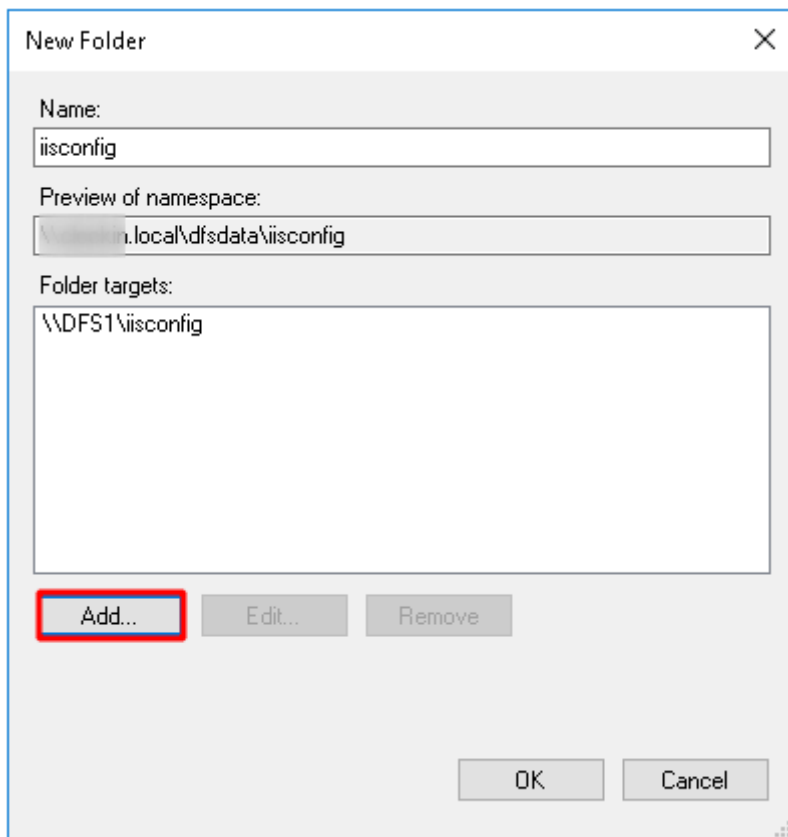
### 3) Create new Folder

Right click on dfsdata Namespace that we just created and select new folder, we need to create two folders www and iisconfig:

Set www as Name and click on Add and then browse, click on New Shared Folder, set www as Name and change the permission to "Administrators have full access; other users have read and write permissions". Click on browse and select partition C, click on Make New Folder, set www, select ok and ok once again. Select www in the shared folders list, then select okay and okay again and create.



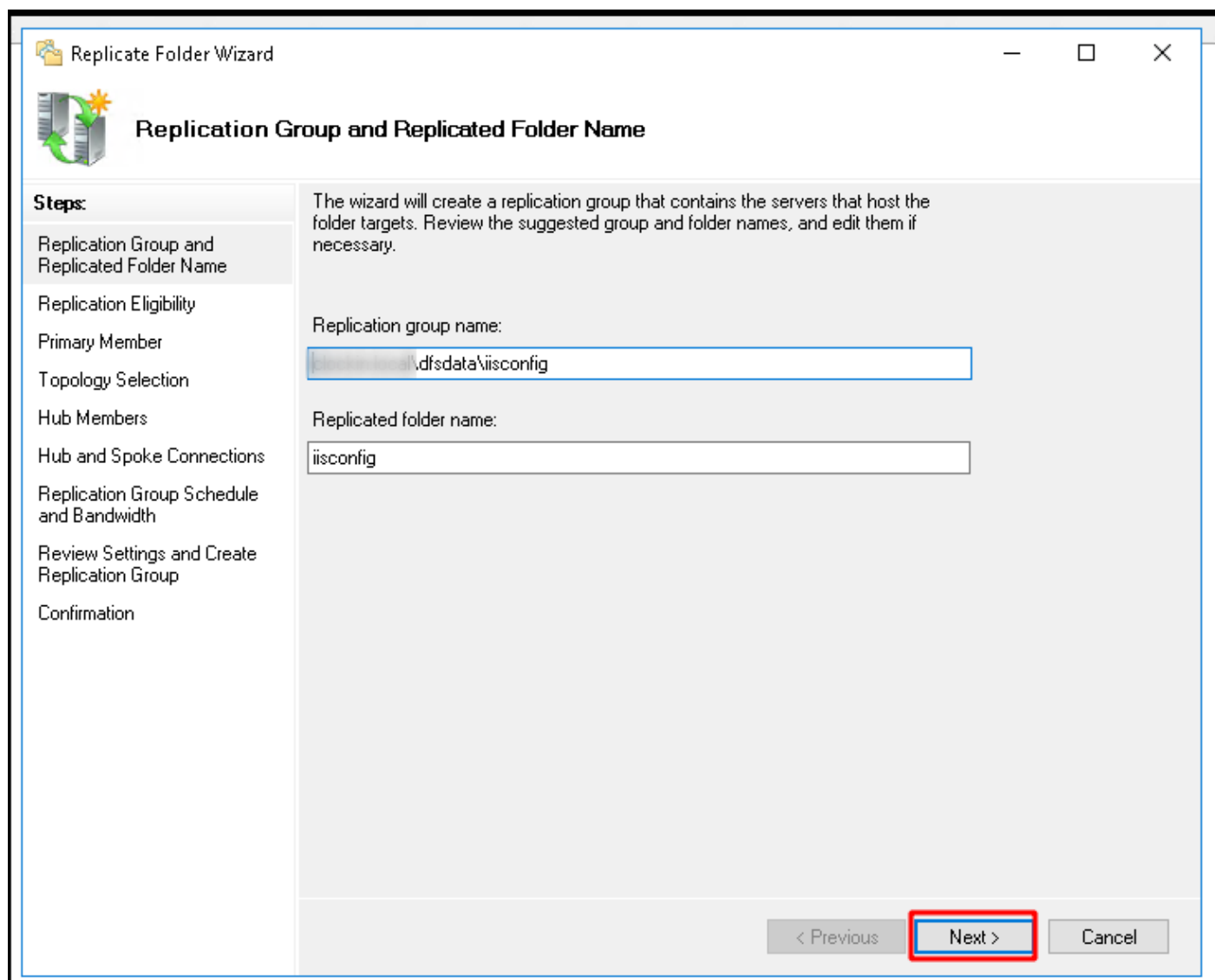
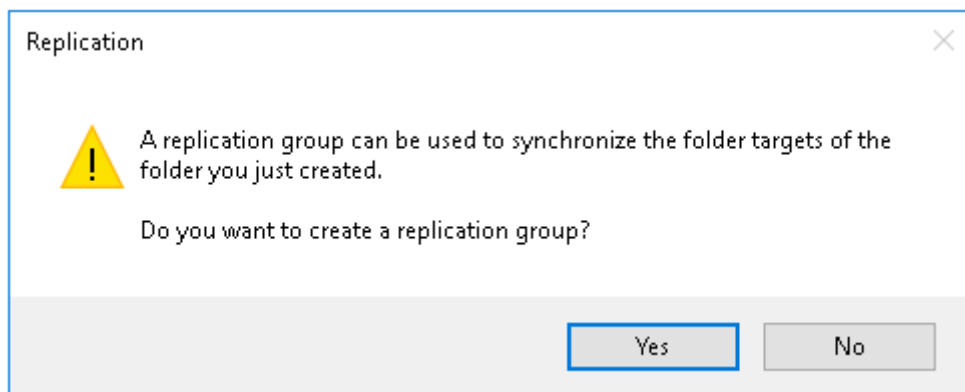


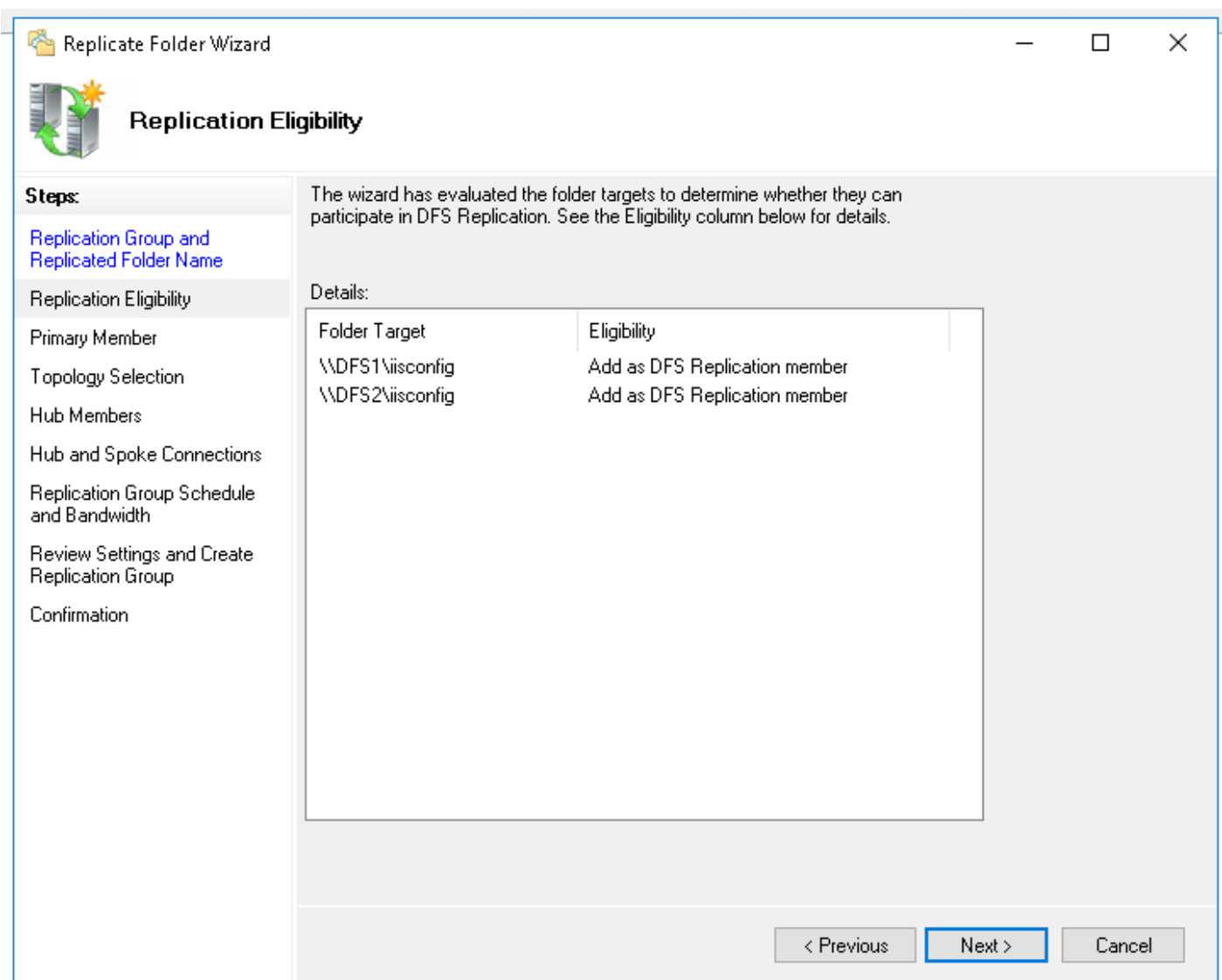


#### 4) Create new Replication Group

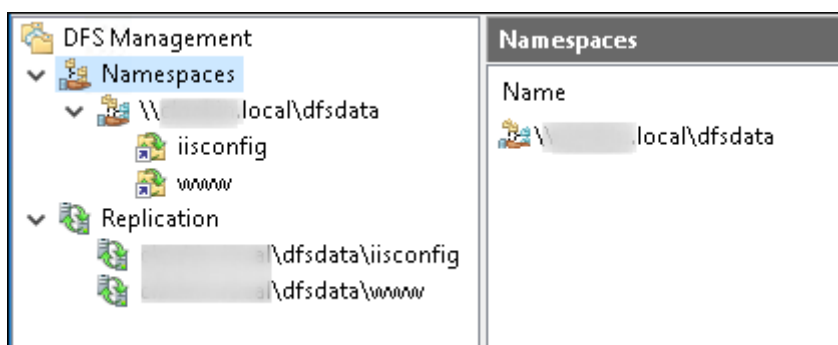
Select yes once "do you want to add another folder target now" pops up. Do the same configuration on dfs1 but enter your dfs2's ID and click on Show Shared Folders. Click on shared folders(don't forget about correct permissions). Once "Do you want to create a replication group" pops up click yes. Keep the replicated folder name and click next. Select Your dfs1 as primary, and choose Full mesh topology and full bandwidth. Validate the creation and click ok.

Do the same for issconfig folder. To confirm that your configuration is correct, create a text file on dfs1 on the shared folder and see if it exists on dfs2.



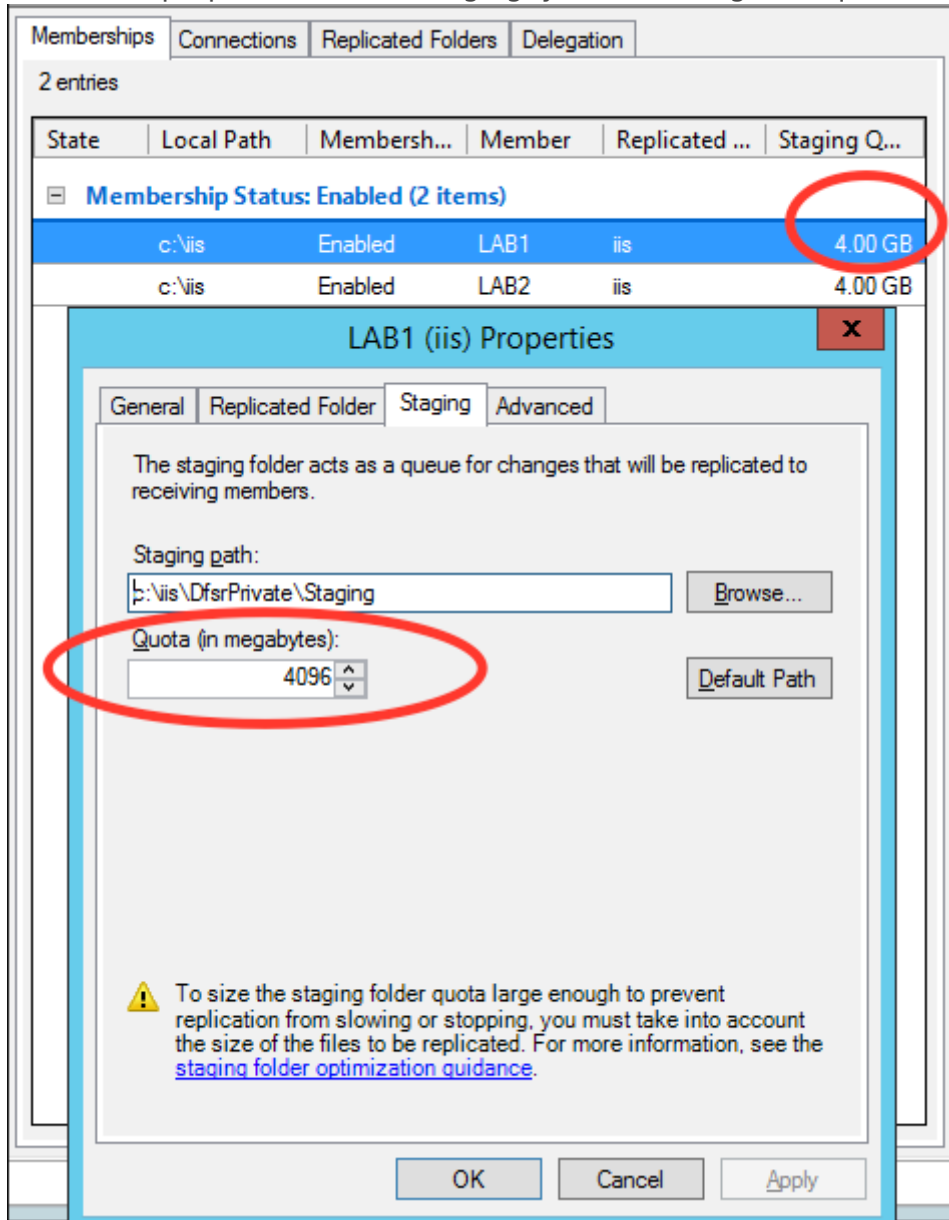


(Repeat same steps for www folder)



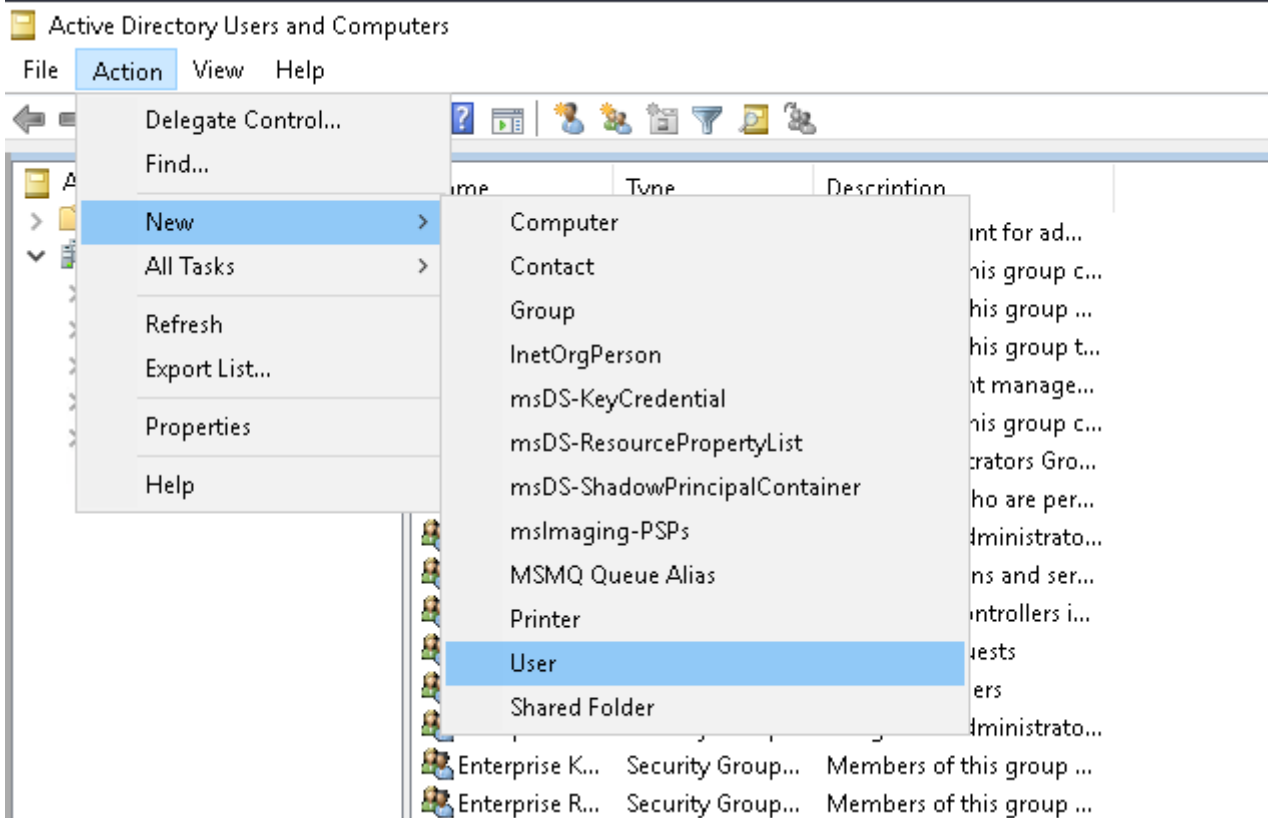
5) Staging quota(this was not part of the exam)

Under replication, click on the first node and Under Membership tab, right click on first member and select properties. Under Staging, you can change the quota for the replicated folder.



Create a IIS user account





New Object - User

Create in: local/Users

First name: IISUSER Initials:

Last name:

Full name: IISUSER

User logon name: IISUSER| @clockwork.local

User logon name (pre-Windows 2000): IISUSER

< Back Next > Cancel

ISUSER Properties ? X

Remote control		Remote Desktop Services Profile			COM+
General	Address	Account	Profile	Telephones	Organization
Member Of		Dial-in	Environment		Sessions

Member of:

Name	Active Directory Domain Services Folder
Domain Users	/Users
IIS_IUSRS	/Builtin

Add...
Remove

---

Primary group: Domain Users

Set Primary Group

There is no need to change Primary group unless you have Macintosh clients or POSIX-compliant applications.

OK
Cancel
Apply
Help

In IIS, click on the server and select Shared Configuration:

Click on export configuration, set the physical path to the shared folder:

You also need to set a Encryption keys password which requires at least one symbol character.

Click on "enable shared configuration" and set the path to the shared folder and enter the encrypted key on pop-up window. Then enable shared configuration on server2 as well.

Export Configuration

Export local configuration files, settings, and encryption keys.

Configuration Location

Physical path:

\\[redacted]\dfsdata\iisconfig\

Connect As...

Encryption Keys

Encryption keys password:

Confirm password:

OK Cancel

configuration using the Export

successfully save

Actions

- Apply
- Cancel

Set Credentials

User name:

\\[redacted]\IISUSER

Password:

Confirm password:

OK Cancel

WEB2

File View Help

Connections

- Start Page
- WEB2 (\\[redacted]\administrato)
- Application Pools
- Sites
  - Default Web Site

### Shared Configuration

Use this feature to configure whether to use IIS configuration on the local computer or a remote location. Configuration task.

☒ Enable shared configuration

Configuration Location

Physical path:

\\[redacted]\dfsdata\iisconfig\

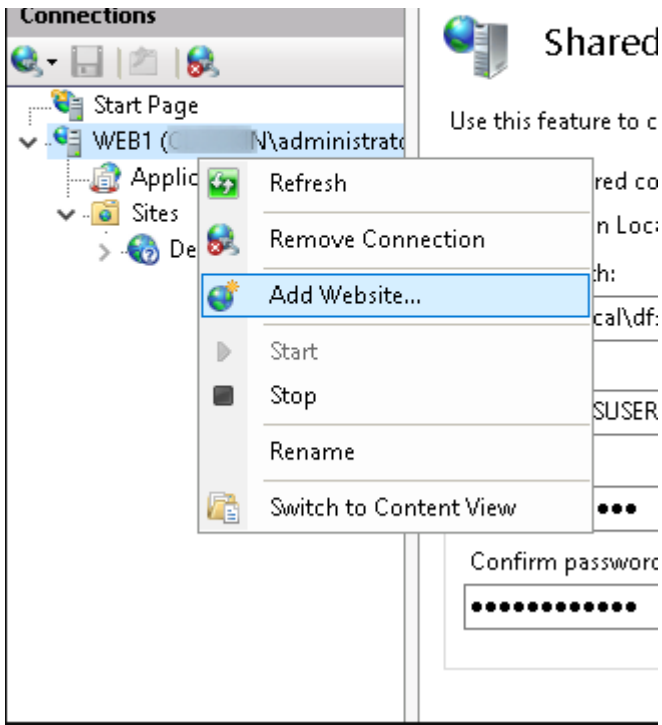
User name:

\\[redacted]\IISUSER

Password:

Confirm password:

Add a domain and connect as IISUSER



**Add Website**

Site name:  Application pool:  

Content Directory

Physical path:  

Pass-through authentication

Binding

Type:  IP address:  Port:

Host name:

Example: www.contoso.com or marketing.contoso.com

☒ Start Website immediately

**Connect As**

Path credentials:

☒ Specific user:  

☐ Application user (pass-through authentication)

**Set Credentials**

User name:

Password:

Confirm password:

