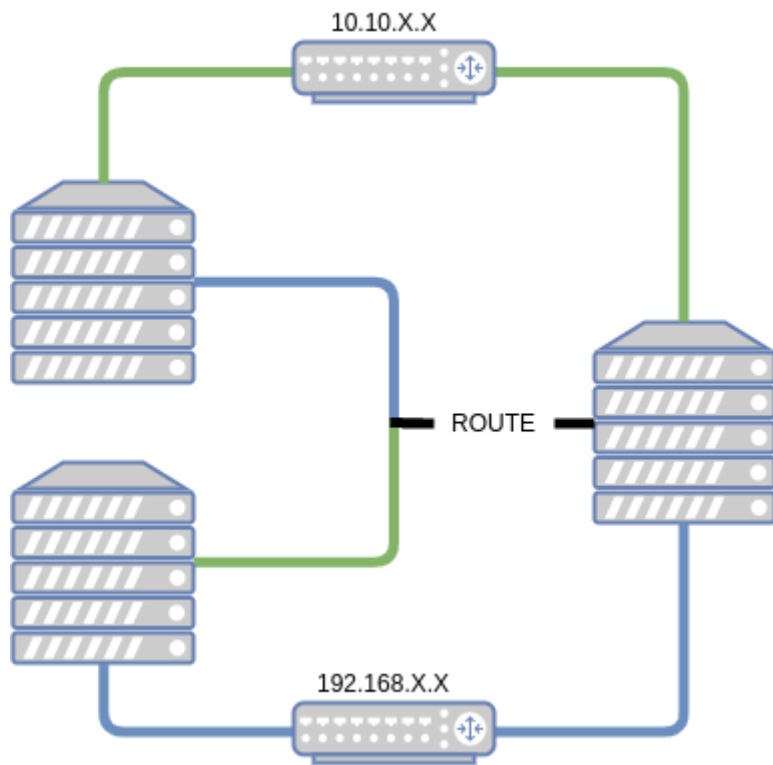


LAN Routing Remote Access Service (RAS)



Select server roles

DESTINATION SERVER
testdave7

Before You Begin

Installation Type

Server Selection

Server Roles

Features

Remote Access

Role Services

Confirmation

Results

Select one or more roles to install on the selected server.

Roles

- ☐ Active Directory Certificate Services
- ☐ Active Directory Domain Services
- ☐ Active Directory Federation Services
- ☐ Active Directory Lightweight Directory Services
- ☐ Active Directory Rights Management Services
- ☐ Device Health Attestation
- ☐ DHCP Server
- ☐ DNS Server
- ☐ Fax Server
- ☒ File and Storage Services (1 of 12 installed)
 - ☐ Host Guardian Service
 - ☐ Hyper-V
 - ☐ Network Policy and Access Services
 - ☐ Print and Document Services
 - ☒ Remote Access
 - ☐ Remote Desktop Services
 - ☐ Volume Activation Services
 - ☐ Web Server (IIS)
 - ☐ Windows Deployment Services
 - ☐ Windows Server Update Services

Description

Remote Access provides seamless connectivity through DirectAccess, VPN, and Web Application Proxy. DirectAccess provides an Always On and Always Managed experience. RAS provides traditional VPN services, including site-to-site (branch-office or cloud-based) connectivity. Web Application Proxy enables the publishing of selected HTTP- and HTTPS-based applications from your corporate network to client devices outside of the corporate network. Routing provides traditional routing capabilities, including NAT and other connectivity options. RAS and Routing can be deployed in single-tenant or multi-tenant mode.

< Previous

Next >

Install

Cancel

Select role services

DESTINATION SERVER
testdave7

Before You Begin

Installation Type

Server Selection

Server Roles

Features

Remote Access

Role Services

Web Server Role (IIS)

Role Services

Confirmation

Results

Select the role services to install for Remote Access

Role services

- ☒ DirectAccess and VPN (RAS)
- ☒ Routing
- ☐ Web Application Proxy

Description

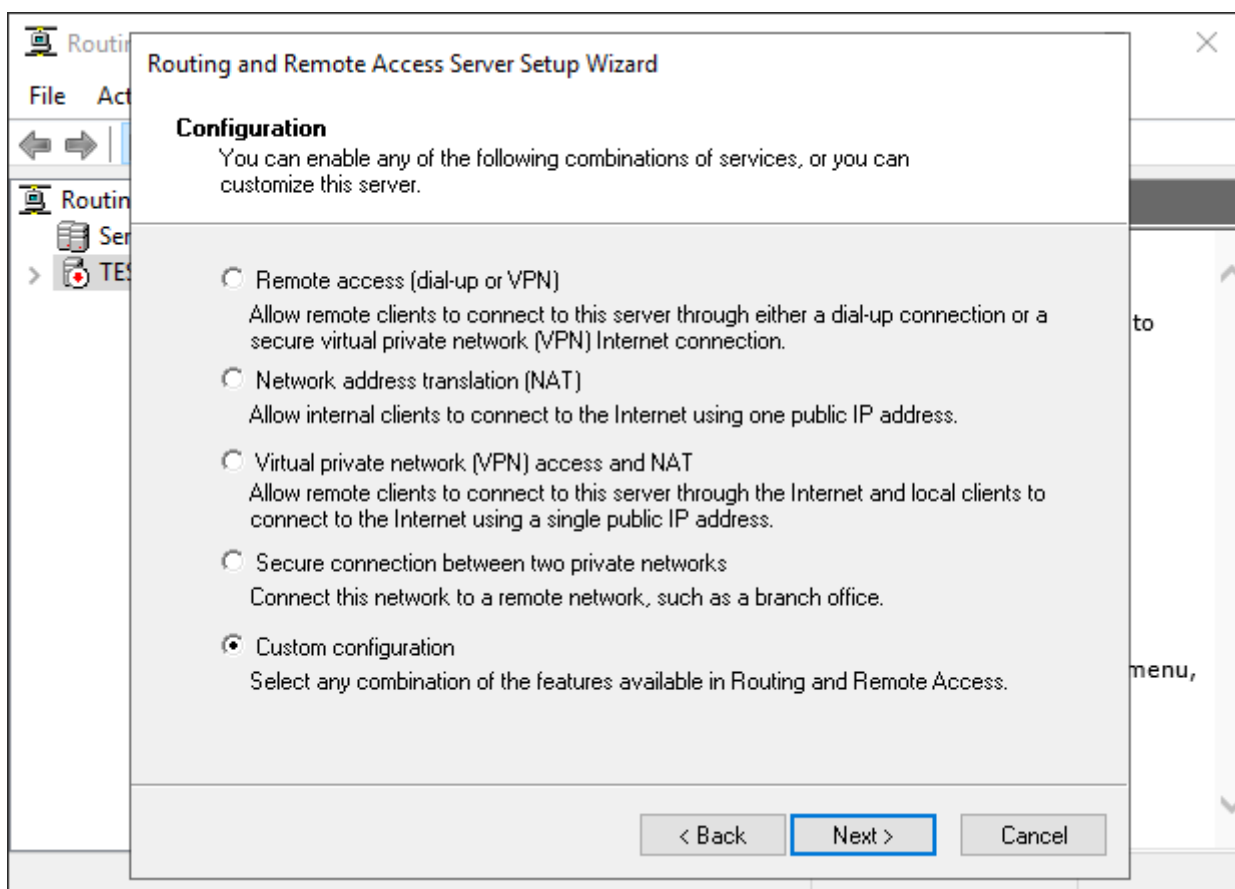
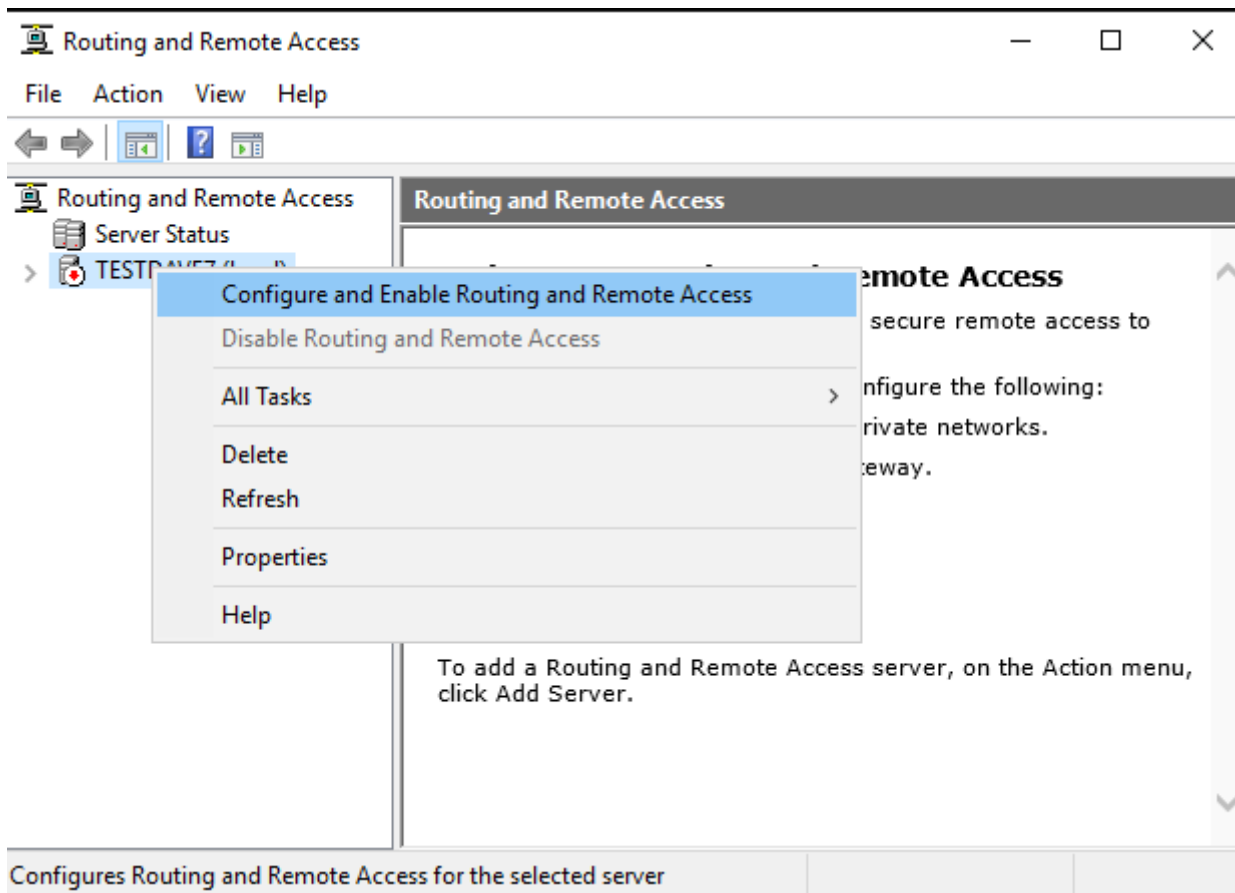
Routing provides support for NAT Routers, LAN Routers running BGP, RIP, and multicast capable routers (IGMP Proxy).

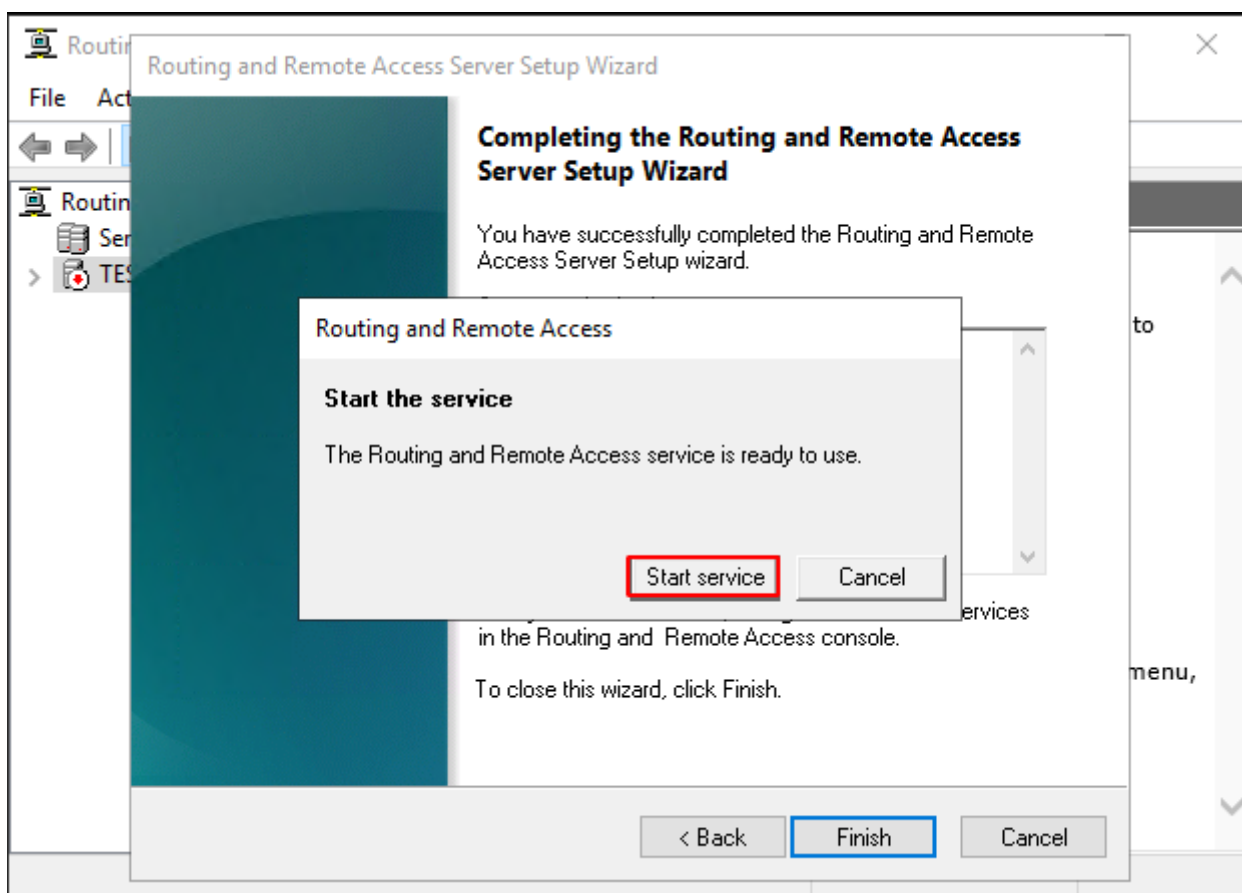
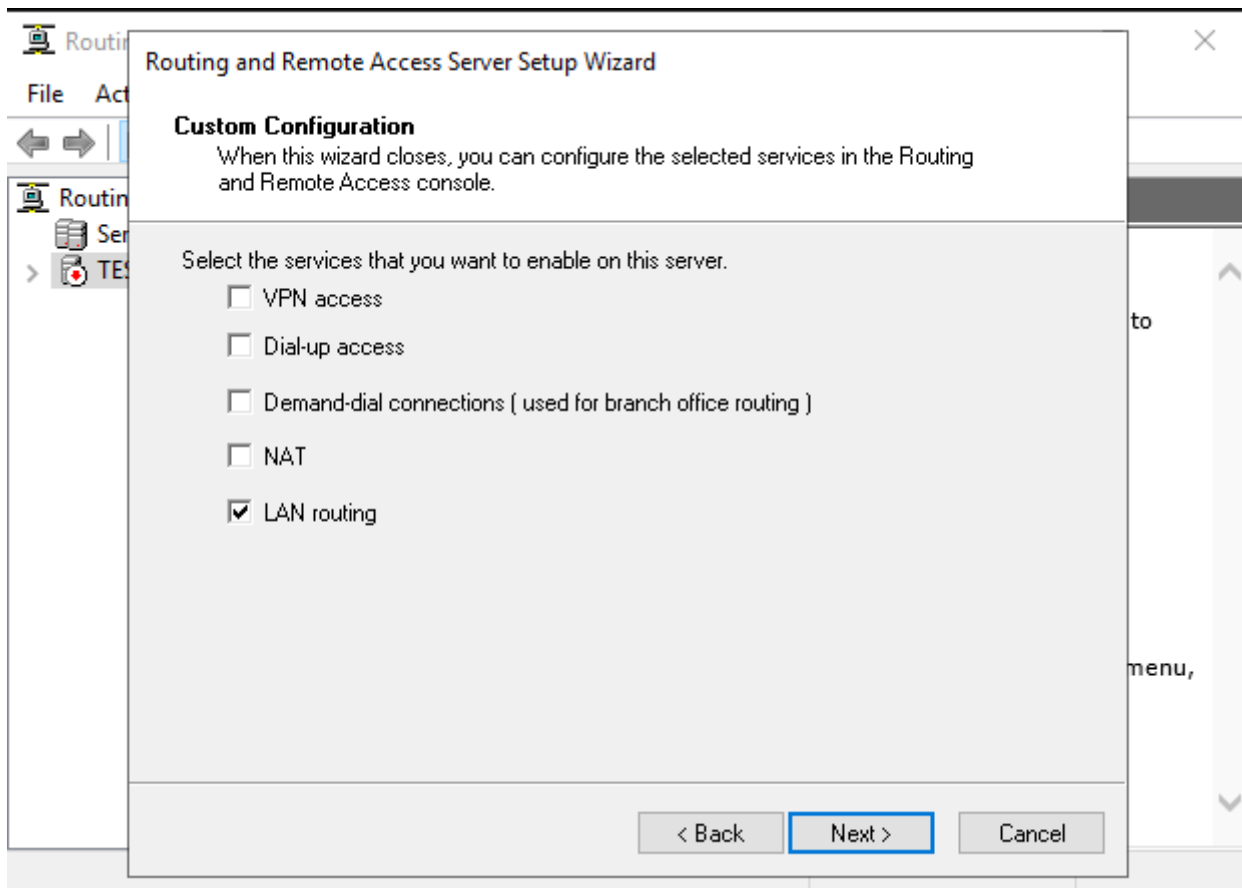
< Previous

Next >

Install

Cancel





Once done add routes on each hosts

```
route ADD -p <destination_network> MASK <subnet_mask> <ras_ip>
```

Revision #1

Created 3 December 2019 00:14:13 by Dave

Updated 3 December 2019 00:30:22 by Dave